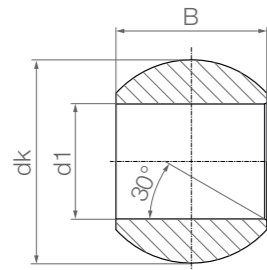


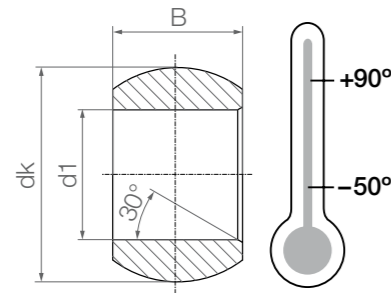
Low moisture absorption spherical balls:
JKM and JEM



JKM



JEM



Order key

Type	Size [mm]	Options
------	-----------	---------

J □ M-03-06

Series
K = Dimensional K series
E = Dimensional E series

iglidur® J spherical balls	Dimensional series	Metric	Inner Ø d1	Width
----------------------------	--------------------	--------	------------	-------

Dimensions [mm]

Part No.	d1 E10	dK	B	Weight [g]
JKM-03-06	3	8.10	6	0.3
JKM-05-08	5	11.30	8	0.7
JKM-06-09	6	12.80	9	1.0
JKM-08-12	8	15.90	12	1.9
JKM-10-14	10	19.00	14	3.1
JKM-12-16	12	22.10	16	4.7
JKM-16-21	16	28.40	21	9.4
JKM-18-23	18	31.50	23	13.2
JKM-20-25	20	35.10	25	17.6
JKM-25-31	25	42.80	31	31.6
JKM-30-37	30	51.20	37	53.0

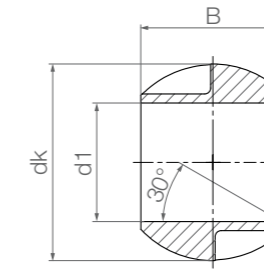
Dimensions [mm]

Part No.	d1 E10	dK	B	Weight [g]
JEM-04-05	4	8.30	5	0.3
JEM-05-06	5	10.20	6	0.4
JEM-06-06	6	10.20	6	0.4
JEM-08-08	8	13.30	8	0.8
JEM-10-09	10	16.10	9	1.3
JEM-12-10	12	18.10	10	1.7
JEM-15-12	15	22.00	12	2.9
JEM-16-13	16	24.10	13	3.9
JEM-17-14	17	25.20	14	4.1
JEM-20-16	20	29.10	16	6.4
JEM-25-20	25	35.60	20	11.5
JEM-30-22	30	40.90	22	14.5
JEM-40-28	40	53.00	28	31.0

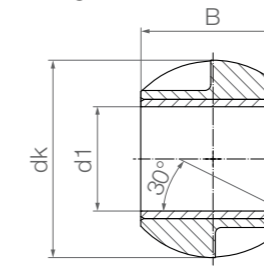
Low moisture absorption spherical balls:
JKM



JKM spherical ball with plain bearing



JKM spherical ball without plain bearing



Order key

Type	Size [mm]
------	-----------

J K M-35-49

iglidur® J spherical balls	K series	Metric	Inner Ø d1	Width
----------------------------	----------	--------	------------	-------

Dimensions [mm]

Part No.	d1 E10	dK	B	Weight [g]
JKM-35-49 ³⁵⁾	35	66.30	49	75.5
JKM-40-49	40	66.30	49	54.5
JKM-45-60 ³⁵⁾	45	82.40	60	125.1
JKM-50-60	50	82.40	60	92.1

³⁵⁾ Diameter reduced by means of a plain bearing