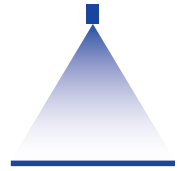


# High pressure flat fan nozzles

## Series 6FH with spray stabiliser



### Features:

- Sharp, uniform flat fan spray
- Extremely narrow spray depth
- Nozzle with spray stabilizer
- Housing: Stainless steel 303, Insert: Hardened stainless steel 420F, spray stabiliser: Stainless steel 301

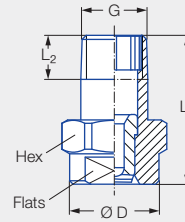
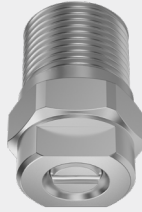


Figure 1

### Applications:

- High pressure cleaning

Series 6FH

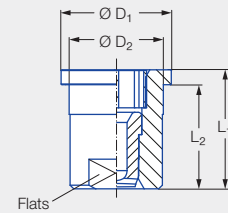
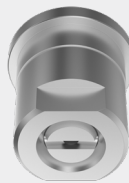


Figure 2

Code	Figure	G	Dimensions [mm]							Weight [g]	p <sub>max</sub> <sup>1</sup> [bar]
			L <sub>1</sub>	L <sub>2</sub>	Ø D	Ø D <sub>1</sub>	Ø D <sub>2</sub>	Hex	Flats		
<b>CA</b>	1	1/8 BSPT	22.00	6.50	13.00	–	–	14	10	13.00	approx. 700
<b>BA</b>	1	1/8 NPT	22.00	6.70	13.00	–	–	14	10	13.00	approx. 700
<b>CC</b>	1	1/4 BSPT	22.00	10.00	13.00	–	–	14	10	18.00	approx. 700
<b>BC</b>	1	1/4 NPT	22.00	10.20	13.00	–	–	14	10	18.00	approx. 700
Assembly with retaining nut 3/8 BSPP	2	–	16.00	14.00	–	14.80	12.65	–	10	13.00	approx. 300

<sup>1</sup> Applies only to operation at constant pressure.

US gal/min at 40 psi	Ordering no.	Flow rate code					Mat. no.	Equivalent bore diameter A [mm]	V̇ water [l/min]							
		Spray angle							Stainless steel 303/420F/301	p [bar]						
		Series	20°	30°	45°	60°										
										40	60	80	100	120	150	200
02	<b>6FH</b>	<b>361</b>	<b>362</b>	<b>363</b>	<b>364</b>	●	1.00	2.88	3.53	<b>4.08</b>	4.56	5.00	5.58	6.45		
021	<b>6FH</b>	<b>371</b>	<b>372</b>	<b>373</b>	<b>374</b>	●	1.02	3.03	3.71	<b>4.28</b>	4.79	5.25	5.87	6.77		
025	<b>6FH</b>	<b>381</b>	<b>382</b>	<b>383</b>	<b>384</b>	●	1.10	3.60	4.42	<b>5.10</b>	5.70	6.24	6.98	8.06		
028	<b>6FH</b>	<b>391</b>	<b>392</b>	<b>393</b>	<b>394</b>	●	1.16	4.04	4.94	<b>5.71</b>	6.38	6.99	7.81	9.02		
03	<b>6FH</b>	<b>401</b>	<b>402</b>	<b>403</b>	<b>404</b>	●	1.18	4.32	5.29	<b>6.11</b>	6.83	7.48	8.37	9.66		
034	<b>6FH</b>	<b>411</b>	<b>412</b>	<b>413</b>	<b>414</b>	●	1.30	4.90	6.00	<b>6.93</b>	7.75	8.49	9.49	10.96		
038	<b>6FH</b>	<b>441</b>	<b>442</b>	<b>443</b>		●	1.33	5.48	6.72	<b>7.75</b>	8.67	9.50	10.62	12.26		
04	<b>6FH</b>	<b>451</b>	<b>452</b>	<b>453</b>	<b>454</b>	●	1.35	5.77	7.06	<b>8.16</b>	9.12	9.99	11.17	12.90		
043	<b>6FH</b>	<b>461</b>	<b>462</b>			●	1.38	6.20	7.59	<b>8.77</b>	9.80	10.74	12.00	13.86		
045	<b>6FH</b>	<b>471</b>	<b>472</b>	<b>473</b>	<b>474</b>	●	1.40	6.49	7.95	<b>9.18</b>	10.26	11.24	12.57	14.51		
05	<b>6FH</b>	<b>481</b>	<b>482</b>	<b>483</b>	<b>484</b>	●	1.55	7.21	8.83	<b>10.20</b>	11.40	12.49	13.96	16.12		
055	<b>6FH</b>	<b>501</b>	<b>502</b>	<b>503</b>	<b>504</b>	●	1.60	7.93	9.71	<b>11.22</b>	12.54	13.74	15.36	17.73		
06	<b>6FH</b>	<b>521</b>	<b>522</b>	<b>523</b>	<b>524</b>	●	1.72	8.65	10.60	<b>12.24</b>	13.68	14.99	16.75	19.35		
065	<b>6FH</b>	<b>531</b>	<b>532</b>	<b>533</b>	<b>534</b>	●	1.75	9.37	11.48	<b>13.26</b>	14.82	16.23	18.15	20.96		

US gal/min at 40 psi	Ordering no.						Equivalent bore diameter A [mm]	V̇ water [l/min]						
	Series	Flow rate code				Mat. no.		p [bar]						
		Spray angle				A3								
		20°	30°	45°	60°	Stainless steel 303/420F/301		40	60	80	100	120	150	200
07	6FH	541	542	543	544	●	1.80	10.09	12.36	14.28	15.96	17.48	19.55	22.57
075	6FH	551	552	553	554	●	1.90	10.81	13.25	15.29	17.10	18.73	20.94	24.18
008	6FH	571	572	573	574	●	2.05	11.54	14.13	16.31	18.24	19.98	22.34	25.80
087	6FH	581	582	583	584	●	2.06	12.54	15.36	17.74	19.83	21.72	24.29	28.04
09	6FH	591	592	593	594	●	2.10	12.98	15.89	18.35	20.52	22.48	25.13	29.02
10	6FH	601	602	603	604	●	2.30	14.41	17.65	20.38	22.79	24.97	27.91	32.23
11	6FH	621*	622*	623*	624*	●	2.40	15.86	19.42	22.42	25.07	27.46	30.70	35.45
125	6FH	641*	642*	643*	644*	●	2.50	18.02	22.07	25.48	28.49	31.21	34.89	40.29
131	6FH	651*	652*	653*	654*	●	2.55	18.89	23.13	26.71	29.86	32.71	36.57	42.23
139	6FH	661*	662*	663*	664*	●	2.65	20.04	24.54	28.34	31.68	34.70	38.80	44.80
15	6FH	671*	672*	673*	674*	●	2.70	21.62	26.48	30.58	34.19	37.45	41.87	48.35
175	6FH	701*	702*	703*	704*	●	3.00	25.23	30.9	35.68	39.89	43.70	48.86	56.41
20	6FH			723*	724*	●	3.05	28.83	35.31	40.78	45.59	49.94	55.84	64.47
25	6FH			763*	764*	●	3.50	36.04	44.14	50.97	56.99	62.43	69.80	80.60
30	6FH			793*		●	3.90	43.25	52.97	61.16	68.38	74.91	83.75	96.70

\* Only available with code CC, BC or 29.

Code	Type of connection
CA	1/8 BSPT
BA	1/8 NPT
CC	1/4 BSPT
BC	1/4 NPT
29	Assembly with retaining nut 3/8 BSPP

Conversion formula for this series:  $\dot{V}_2 = \dot{V}_1 \cdot \sqrt{\frac{p_2}{p_1}}$



Assembly accessories can be found in Chapter 9 "Accessories".

Ordering Series + Flow rate code + Material no. + Code = Ordering no.  
example: 6FH + 541 + A3 + CA = 6FH.541.A3.CA